

Dear Public Manager

Scuola Superiore Sant'Anna de Pisa, Italy (under the Management Improvement Program), and Federal University of Rio Grande do Sul, Porto Alegre (under the Industrial Engineering Post Graduation Program) are developing an exploratory research with the aim to observe the relationship between participative environmental knowledge from the perspective of public managers.

The research is called: "Knowledge Management and sustainability in urban public environment: public participation as tool for collective learning – environmental public officer (EPO) perspective in a comparative case study Italy – Brazil".

The questionnaire below is going to be sent to 64 EPOs, 32 of Tuscany Region (TR), and 32 of Porto Alegre Metropolitan Region (PARM). Questions presented are of multiple choice, and a simple alternative must be selected.

We invite you to participate of this initiative providing some minutes for responding the survey. After fill the questions, in order to send the answers, it is enough to click over the link that appears at the end of this message, and order "Send".

Thank you for your collaboration. We are committed with the disclosure of the essential information on the results of this study in order to collaborate for the improvement of public organizations and sustainable management of urban areas.

Surveyed municipalities (random order): Sapiranga, Sapucaia do Sul, Taquara, Triunfo, Viamão, Rolante, Alvorada, Araricá, Arroio dos Ratos, Cachoeirinha, Eldorado do Sul, Estância Velha, Esteio, Glorinha, Gravataí, Guaíba, Ivoti, Campo Bom, Canoas, Capela de Santana, Charqueadas, Dois Irmãos, Porto Alegre, Santo Antônio da Patrulha, São Jerônimo, São Leopoldo, Montenegro, Nova Hartz, Nova Santa Rita, Novo Hamburgo, Parobé, Portão.

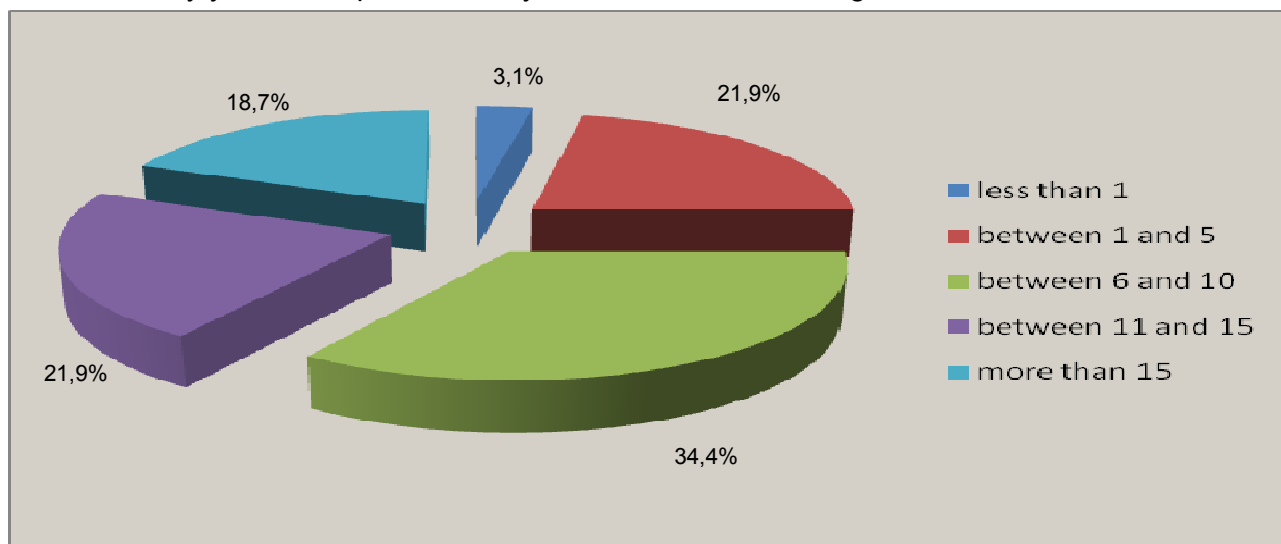
Data collected from PARM respondents:

	Questions		A4	B4	B5	B6	B7	C3	C5	C6	C7.1	C7.2
Municipality	Area (km²)	Population	Exper.	Sources	Knowl.	Knowl.	Knowl.	Knowl.	Particip.	Particip.	Particip.	Particip.
M1	70,8	195.718	8	0,5	0,25	0,75	1	0,25	0,5	0,5	0,25	0,5
M2	35,3	4.868	3	1	1	1	1	0,5	0,5	0,5	0,75	0,75
M2	425,9	13.608	13	0,5	1	1	1	1	0,5	0,75	0,75	0,75
M4	43,8	118.294	8	0,5	1	1	1	1	1	1	0,75	0,75
M5	61,4	60.081	20	0,5	1	0,75	1	1	1	1	0,75	0,75
M6	131,1	324.025	20	0,5	0,75	1	1	1	1	0,75	1	1
M7	184,0	11.613	8	0,5	1	1	1	1	1	1	0,75	0,5
M8	216,5	35.363	13	1	1	1	1	1	1	0,5	0,75	0,75
M9	65,2	27.572	13	1	0,75	0,75	1	1	0,5	1	0,5	0,5
M10	509,7	34.335	3	0,5	1	1	1	1	1	1	0,75	0,75
M11	52,4	42.589	13	0,5	1	1	1	1	1	1	1	1
M12	27,5	80.669	3	0,5	1	1	1	1	1	1	1	1
M13	323,6	6.885	8	1	0	1	1	0,25	0,5	0,5	0,75	0,75
M14	463,8	255.762	3	0,5	0,75	0,75	1	NA*	1	1	0,75	0,5
M15	377,0	95.230	8	1	1	1	1	1	1	0,25	1	1
M16	63,1	19.877	8	0,5	1	1	1	1	1	0,5	1	1
M17	420,0	59.436	0,5	1	0,25	0,25	0,5	NA*	0,5	0,25	0,5	0,5
M18	62,6	18.346	20	0,5	0,25	1	1	1	1	1	1	0,75
M19	217,9	22.706	20	0,5	0,75	0,75	1	1	0,5	1	0,75	0,5
M20	223,6	239.051	3	1	0,25	0,75	1	1	1	0,5	0,75	0,5
M21	109,0	51.481	13	0,5	1	1	1	1	0,5	0,25	0,75	0,75
M22	159,9	30.881	8	0,5	0,75	1	1	1	1	1	0,75	0,75
M23	496,8	1.409.939	20	0,5	0,25	1	1	1	1	1	0,75	0,75
M24	1048,9	39.679	8	0,5	1	1	1	1	1	0,75	1	0,5
M25	937,0	22.141	13	0,5	1	0,75	1	1	1	0,75	1	1
M26	102,3	214.210	8	1	1	1	1	1	1	1	1	1
M27	137,5	75.020	8	0,5	1	1	1	1	1	1	1	0,75
M28	58,6	130.988	3	0,5	0,75	1	1	1	1	0,5	0,75	0,75
M29	457,1	54.656	8	0,5	1	0,75	1	NA*	1	1	0,75	0,5
M30	823,4	25.811	3	0,5	0,75	0,75	1	1	1	0,75	1	0,75
M31	1494,3	239.234	20	0,5	1	1	1	1	1	0	0,75	0,75
M32	297,0	19.493	13	0,5	0,75	1	1	1	0,5	1	1	0,75

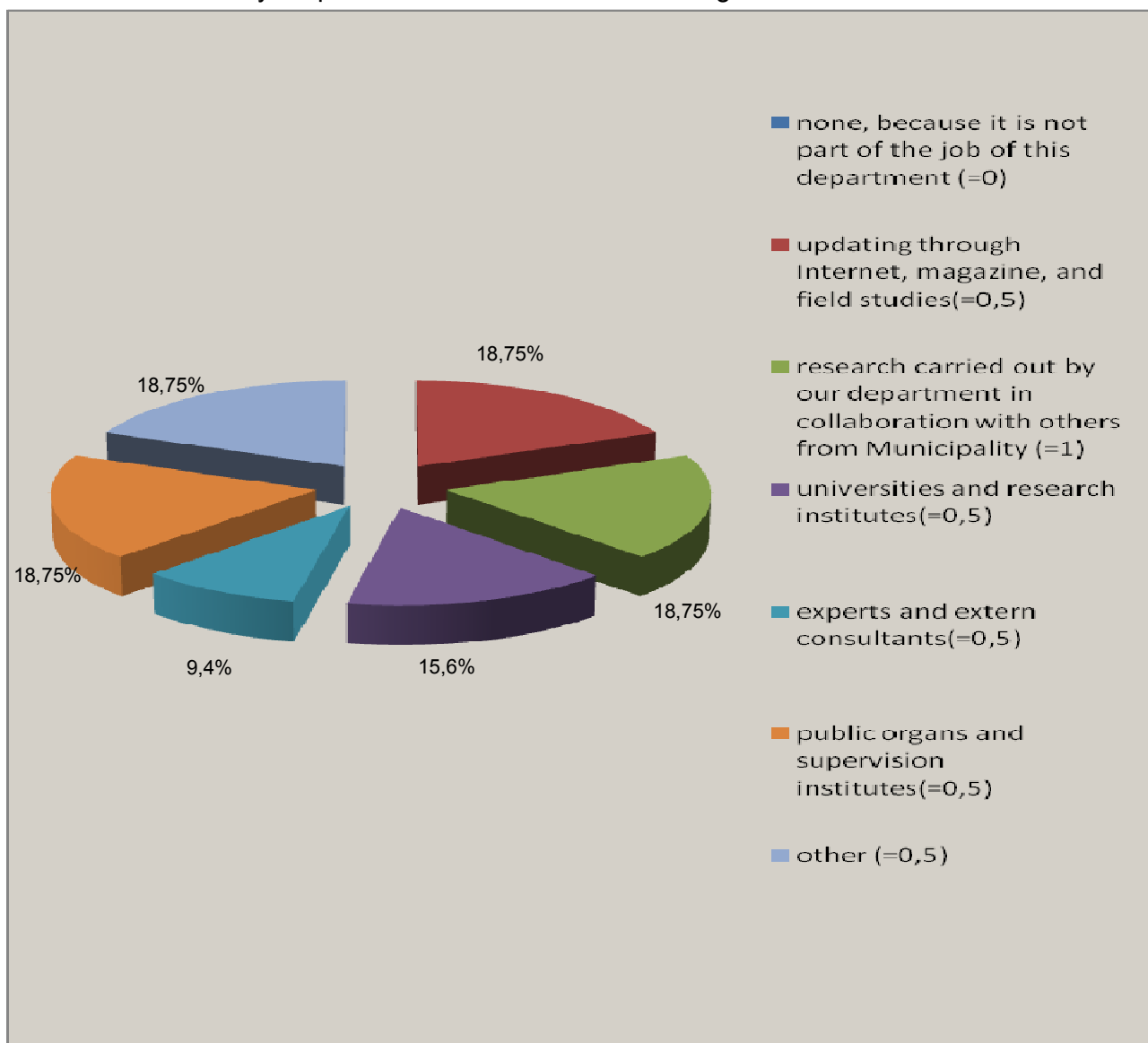
*NA: not answered

Survey's results with selected questions for the hypotheses tests and for the comprehension of the environmental public management context of the assessed regions (values between brackets, beside the description of each alternative, indicate the weight attributed to each one, but it were not provided in the questionnaire presented to the respondents):

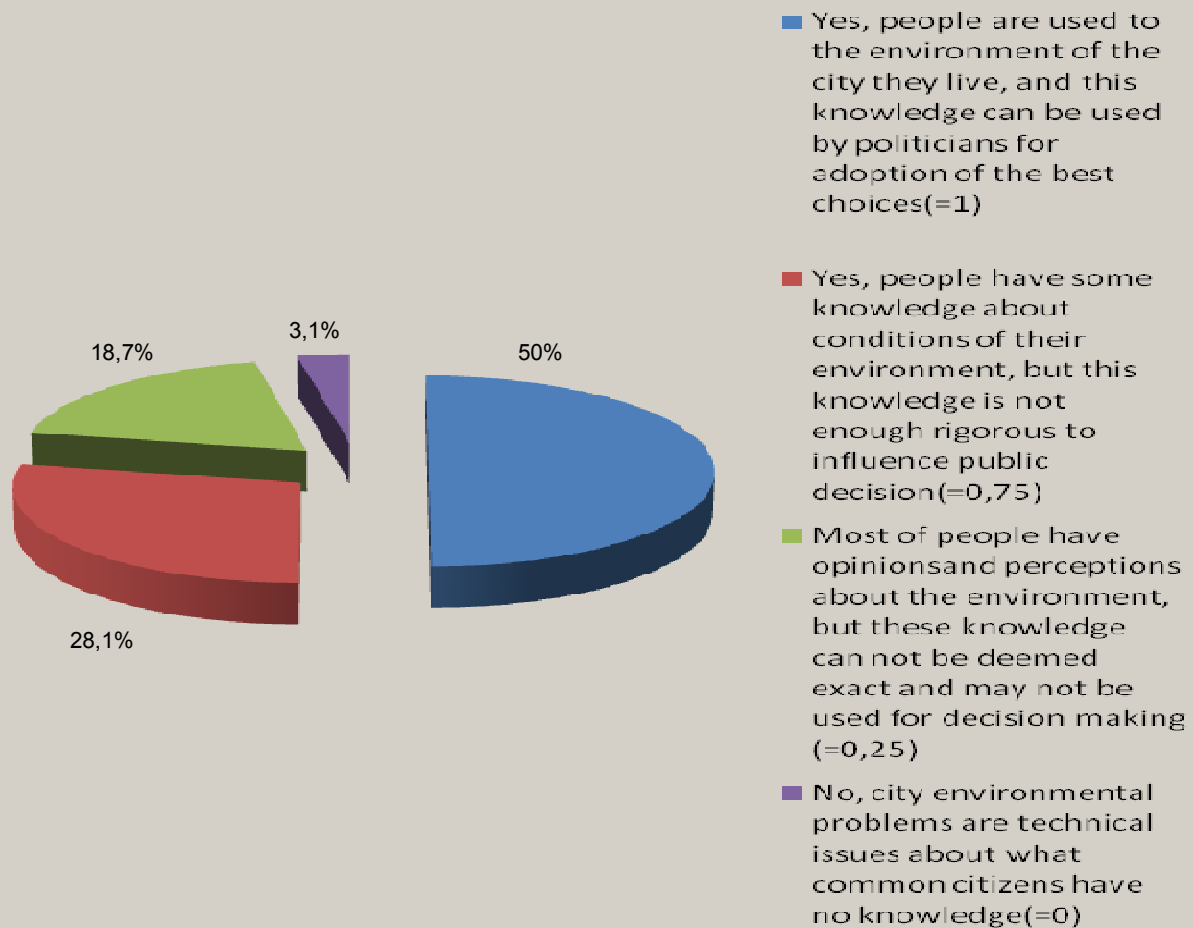
A.4 How many years of experience do you have in Public Management?



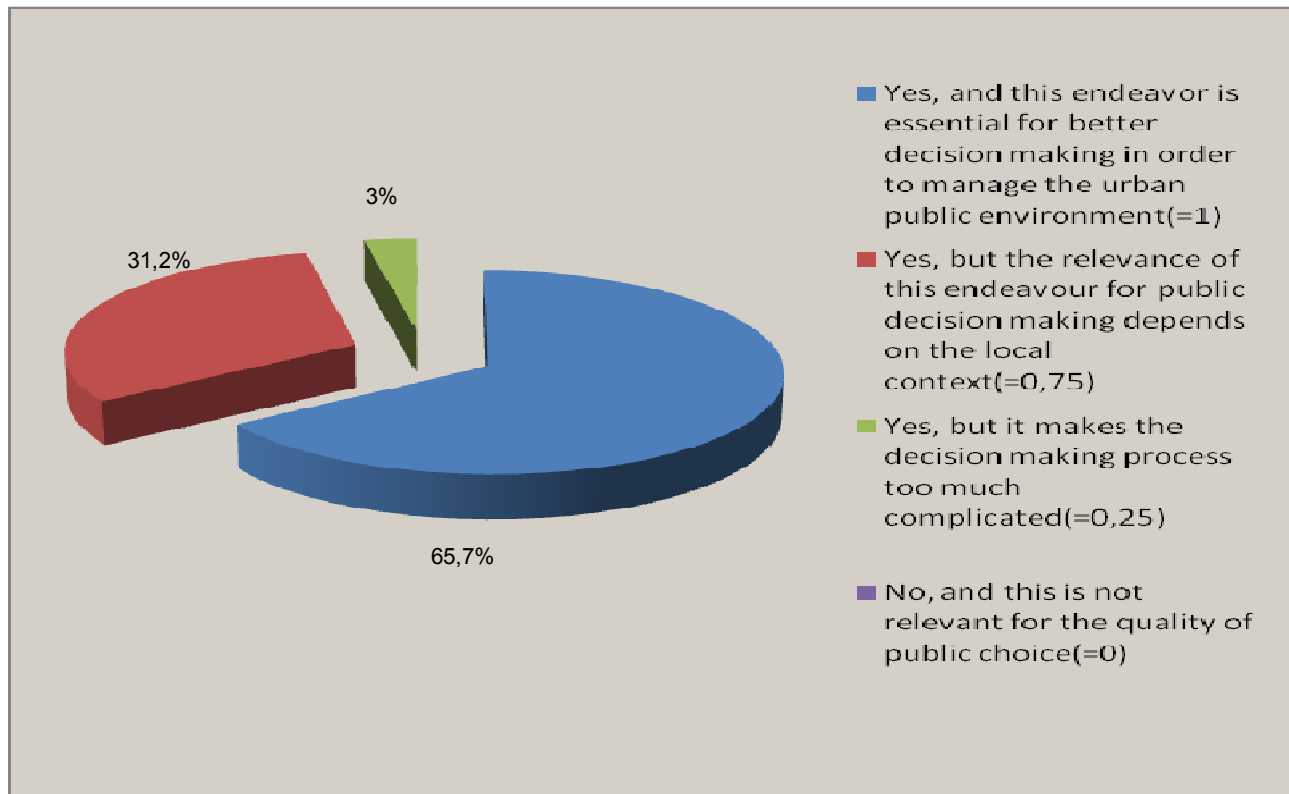
B4 What is the main source of consultation of your secretary, department or division in order to collect data necessary for public urban environmental management?



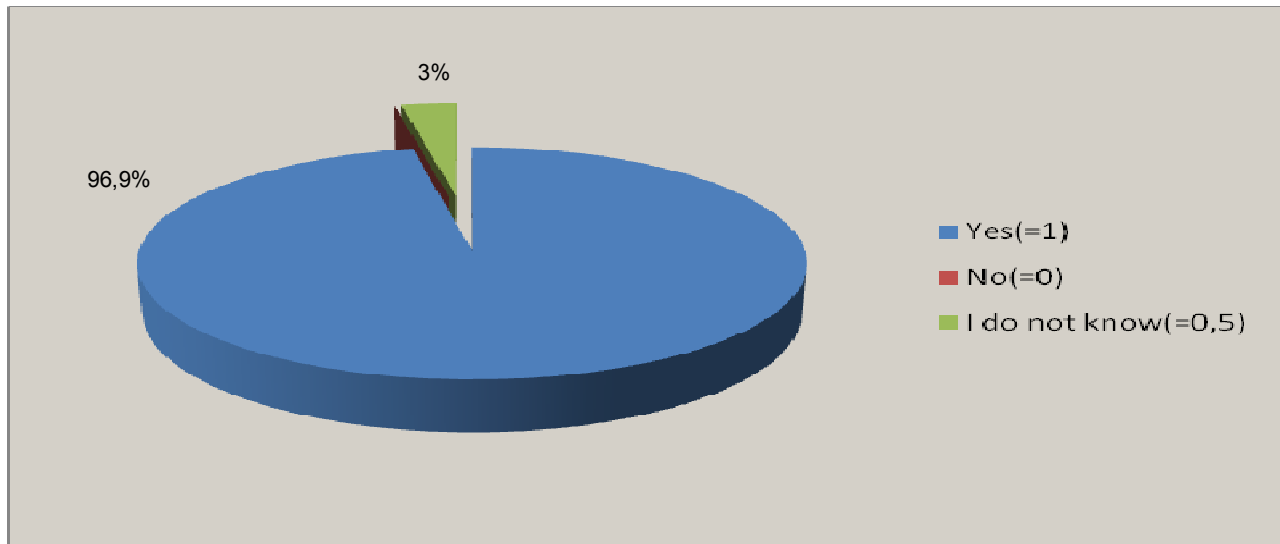
B5 Do you believe people have knowledge that can contribute for improving the urban environment through best decision making?



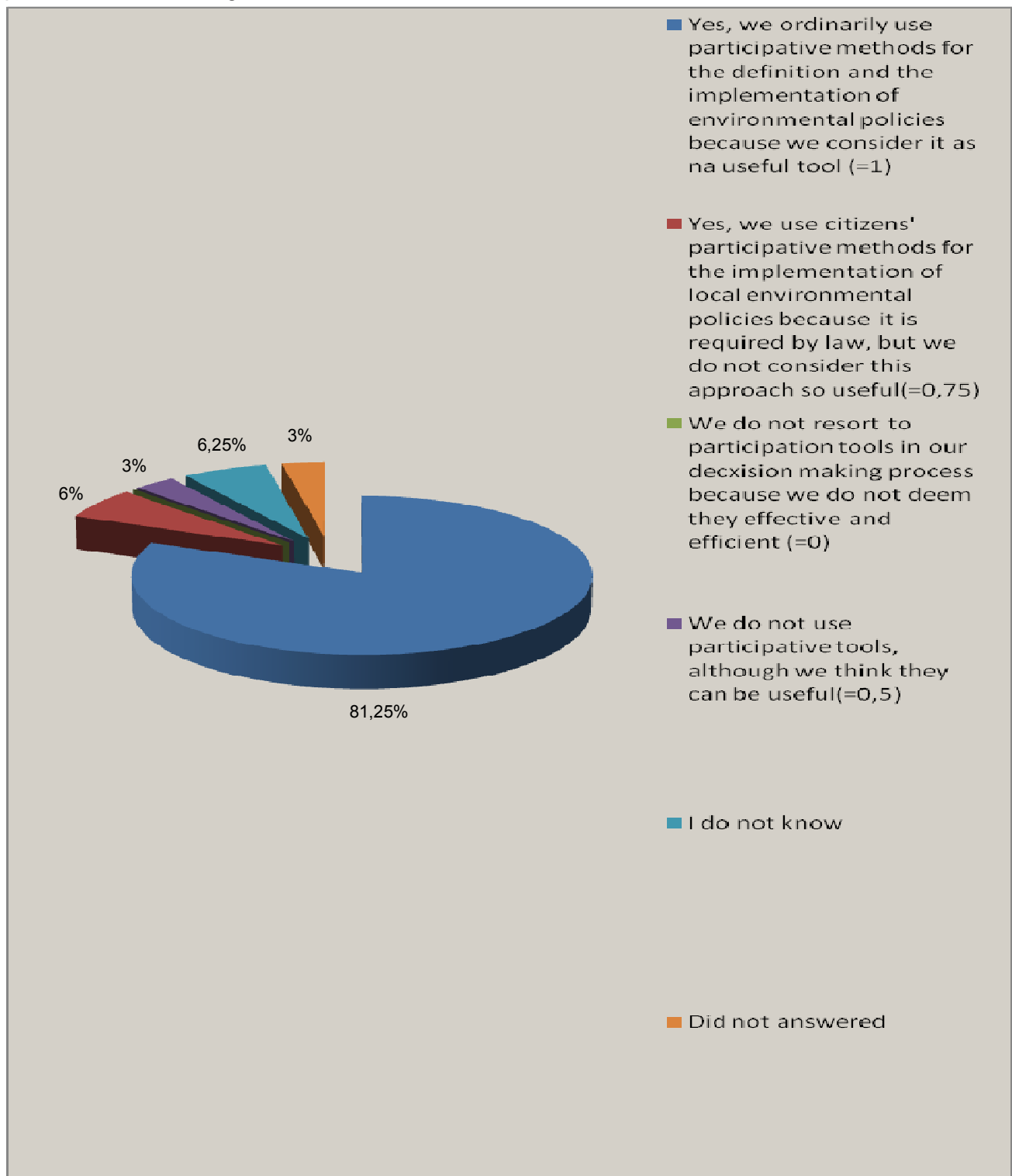
B6 Do you deem possible to integrate technical and scientific knowledge (of experts) and scattered knowledge (of citizens) in order to improve the basis of public sector knowledge?



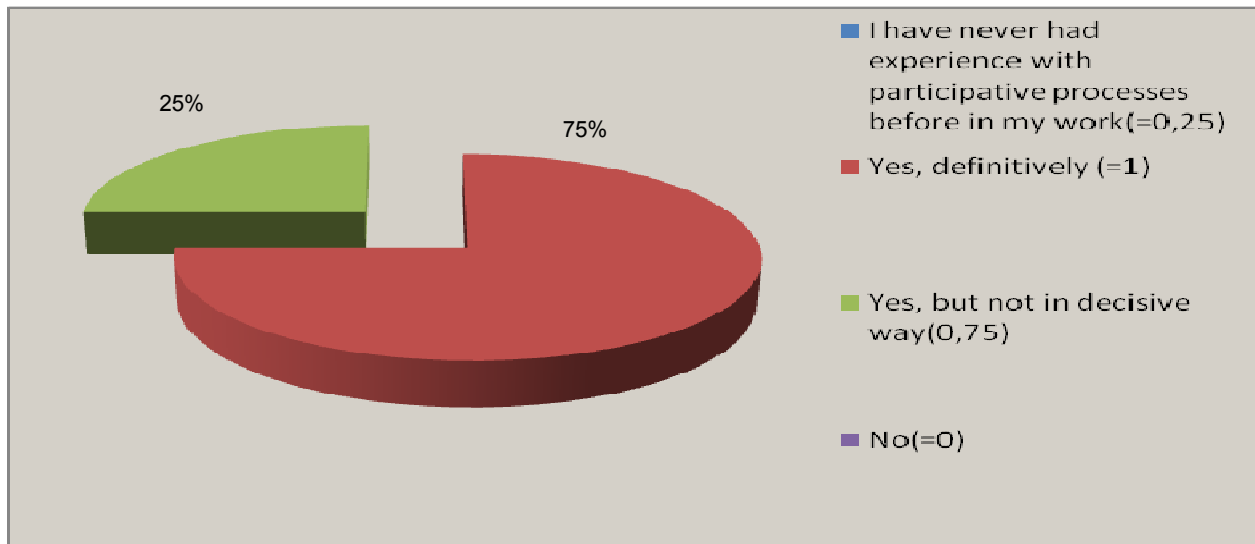
B7 "Public decisions, regarding local environment, need information of different nature (technical and scientific, political and social, from the routinary experiences), and participation can be the way for integrating these different types of knowledge." Do you agree with this statement?



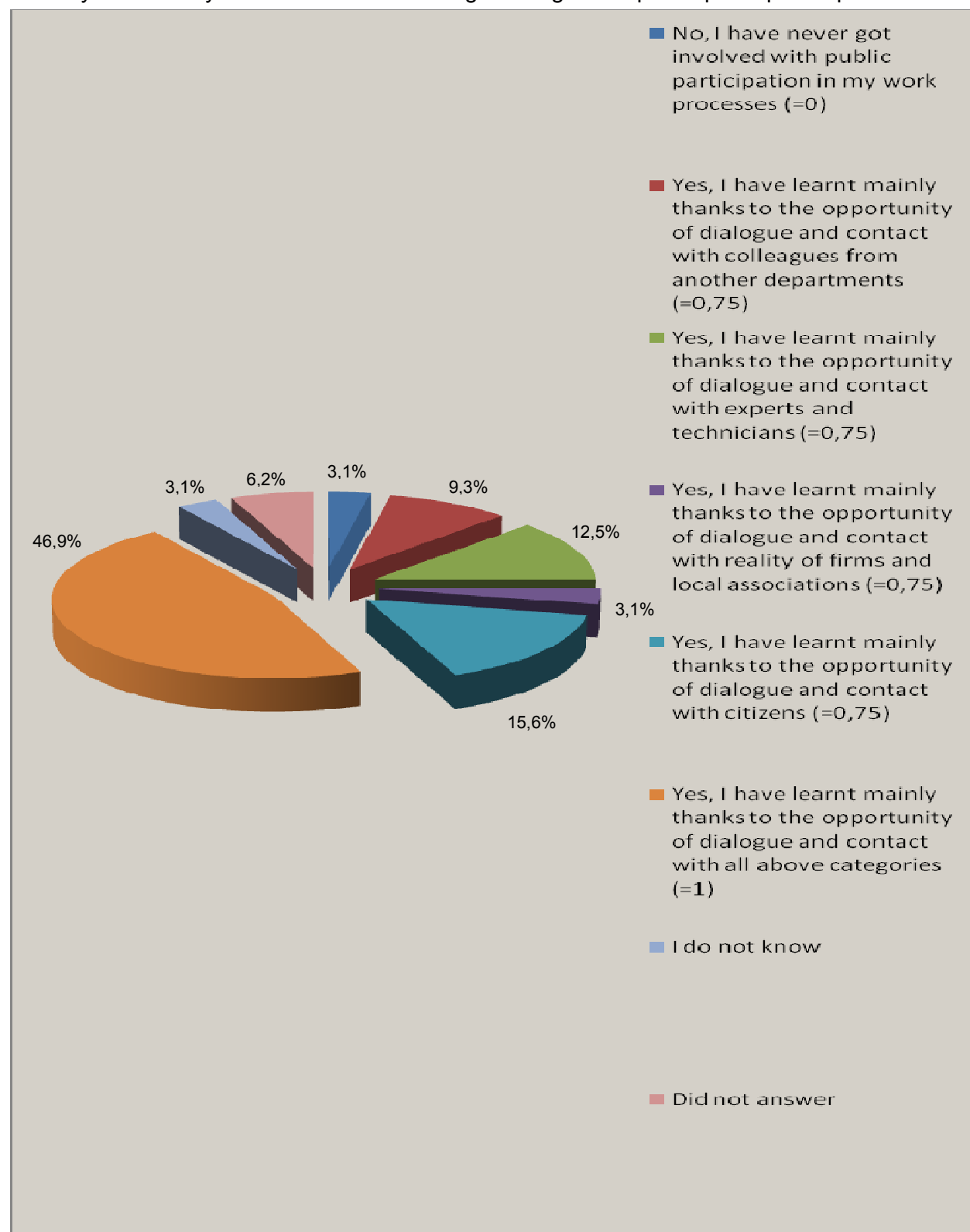
C3 Does public administration in which you work adopt tools/methods for involving citizens in public decision making on environment?



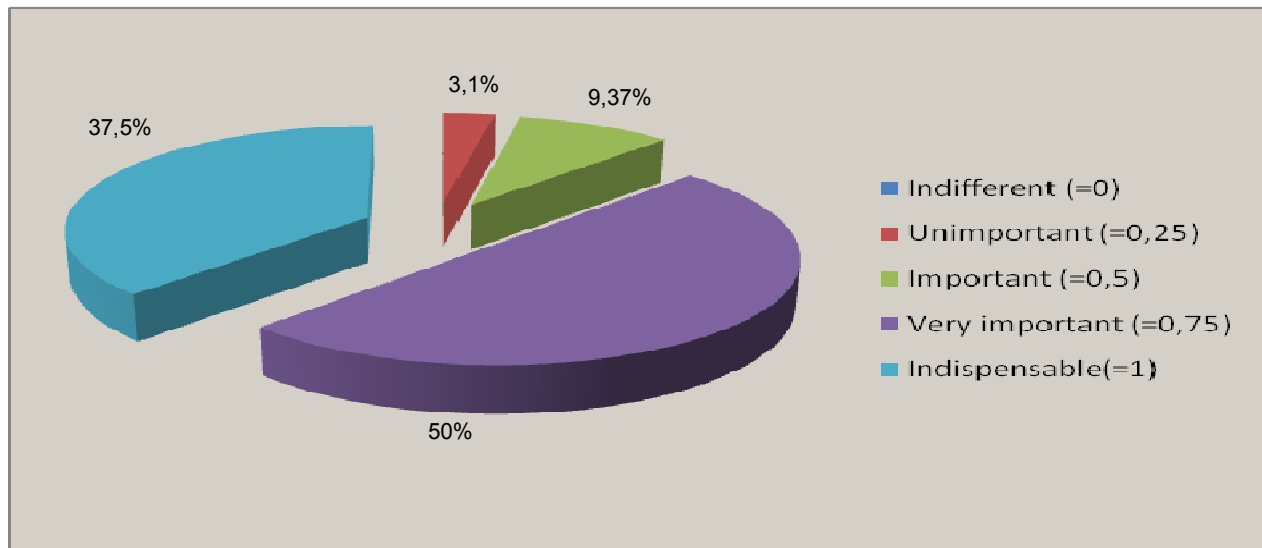
C5 Do you believe participation contributes to improve the governmental procedures for urban environmental management in the work experience of your secretary/department/division?



C6 Do you believe you have learnt something working within public participation processes?



C7.1 What is the importance of participative processes in order to improve environmental appreciation by citizens?



C7.2 How do you assess public participation as means to reinforce knowledge of people from administration where you work?

